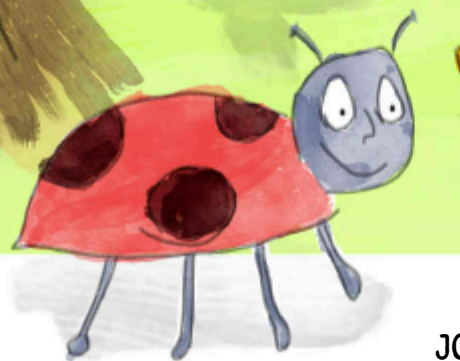




Fundraising With

Stepping Stones





Team 100



JOIN TEAM 100 AND MAKE A SPLASH IN THE COMMUNITY!

At Stepping Stones Preschool, we believe in creating vibrant opportunities for children and families in our community. By teaming up with local businesses, government bodies, and amazing organisations, we're making a positive impact on the lives of our little ones

INTRODUCING TEAM 100

Team 100 is our stellar group of businesses that go above and beyond, donating £100 or more in a calendar year to support Stepping Stones Preschool. This isn't just a partnership; it's a commitment to building a brighter future for our children!

THIS YEAR, WE'RE FOCUSED ON JOY AND WELLBEING

This year we're doubling down on our efforts to boost children's wellbeing, and enhance communication and social skills. It's a mission that brings joy to our little ones and peace of mind to their families.

HOW TO JOIN THE FUN:

1. **Contact our team to give a one-off donation:** Whether you prefer the ease of online giving, the classic charm of a cheque, or want our bank details for a direct transfer, we'd love to make donating easy for your business.
2. **Set up a recurring direct debit:** Fancy a standing ovation for your ongoing support? Contact us to set up a recurring direct debit.
3. **Going the extra mile:** Gather your colleagues and ride the fundraising wave together! This fundraising pack is full of ideas to kickstart your workplace fundraising adventure.

LET'S TALK TEAM 100!

Want more info? Have burning questions about Team 100? Send us an email at admin@steppingstonescanterbury.org.uk. We're always up for a chat and thrilled to welcome new members to the Team 100 family!

Why Join Team 100?

- Support the Canterbury community
- Invitations to our events
- Receive our termly newsletter
- Be featured in our newsletter that reaches 30+ families and supporters
- Fulfil your CSR objectives
- Donations are tax-deductible



How your money makes a difference

£10

This could fund refreshments for one session

Providing refreshments ensures that the children attending the session have a healthy snack and are hydrated, which is essential for their well-being and ability to engage in activities effectively

£18

This could fund a session for one child

This contribution helps cover the costs associated with staffing, facilities, and resources needed to provide a safe and nurturing environment for children.

£50

This could fund new play equipment for the outdoor play area

Outdoor play is crucial for children's physical health, social development, and overall well-being. Investing in new play equipment enhances the quality of outdoor play experiences, encouraging physical activity, imagination, and exploration.

£100

This could fund an enrichment experience for the children at Stepping Stones

This could range from a British Sign Language (BSL) performance to a sports experience. Such experiences broaden children's horizons, expose them to new skills and knowledge, and foster cultural appreciation and inclusivity.

Wellbeing

Community

Play

Care



Ways you can fundraise

Explore various ways for workplace fundraising, whether by using suggestions from the provided list or embarking on a team-based challenge. Other workplace ideas are:

1. **Collection Tins:** A simple yet effective method for accumulating loose change.
2. **Matched Giving:** Amplify your fundraising efforts by participating in programs that match the funds you raise.
3. **Charity of the Year:** Suggest Stepping Stones as your designated Charity of the Year, rallying support and raising funds throughout the year.

Quiz

Reading challenge

10,000 Steps a day

Car Wash

Knitting Club

Coffee Morning

Fashion show

Teddy bear picnic

Birthday fundraiser

Pyjama day

Bake sale

Golf day



The Legal Stuff

Stepping Stones Fundraising Guide for Supporters:

Gift Aid

Gift Aid offers a straightforward way to boost your fundraising efforts: if your supporter is a UK taxpayer, the government will contribute 25p for every £1 they donate to Stepping Stones. However, there are specific guidelines to adhere to. Gift Aid cannot be applied to ticket sales, raffle ticket sales, winning auction bids, or any transaction other than an individual donation. Additionally, it cannot be claimed on behalf of a group or as part of a collective contribution. For further details, visit ico.org.uk or gov.uk/donating-to-charity/gift-aid.

Data

Throughout your fundraising activities, you may handle personal data belonging to individuals involved. It's crucial to ensure that any paper or electronic data you possess complies with the General Data Protection Regulation (GDPR). Safeguard stored data securely to prevent loss or damage. Only retain data for as long as necessary, and refrain from sharing someone's information without their consent.

Ethical Fundraising

Stepping Stones is committed to conducting fundraising activities that uphold the charity's reputation, mission, and the welfare of its children. We cannot accept donations derived from the manufacturing of weapons, tobacco, or alcohol brands. For inquiries, please contact admin@steppingstonescanterbury.org.uk

Raffles & Lotteries

Hosting a raffle or lottery is an excellent means of fundraising with minimal overhead costs. However, stringent laws govern these activities (refer to the Gambling Commission for detailed information). Ensure familiarity with these regulations and conduct your auction, lottery, or raffle accordingly. Licenses are mandatory for all online auctions. While we provide guidance as a responsible charity, if you proceed with a different type of raffle, it becomes your responsibility, and we cannot be held liable for any actions taken by Gambling License Regulators.

Children learn through creative play



We nurture every child's individual interests and partner with families in their child's learning, giving children the freedom to develop at their own pace. We enable children to be at the forefront of their own learning.

"Whenever I had some questions about my child you always found recommendations of what would be best for him, taking into account his nature."

Our practice is inspired by:

- Froebel, who coined the term kindergarten (children's garden) and was passionate about natural resources and learning in the outdoor environment
- Montessori, who believed children learn through doing tasks for themselves
- Bottrill, who knows that children learn through play
- Ephgrave, whose planning in the moment approach ensures learning is meaningful as it is led by children

Family Stories

"The staff have gone above and beyond to help my daughter and me. They have sorted her an EHCP and done hours of 1:1 work with her"

Megan Thornton, Parent

"Stepping Stones has helped us immensely by being such amazing EY practitioners. My child was just able to settle flawlessly"

Yanni Stavroulakis, Parent

"My child seems more confident since joining perhaps because staff have shown him he has a wide selection of adults he can trust"

Chloe Deenmamode , Parent



A Year Of Fundraising

January

Have a sponsored
New Years
Resolution



February

Valentines
Bake Sale



March

Pancake Flipping
Competition



April

Easter Egg Hunt
Spring Garden Party



May

Sponsored Step
Challenge



June

Grow A
Sunflower



July



Host a
Summer Fair

August

BBQ
Beach Day



September

Back To
School Day

Autumn
Crafts



October

Halloween
Party



November

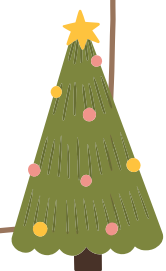
Fireworks

Winter Walk



December

Sponsor A
Christmas
Party



Our Pre School

Special Educational Needs

We have a dedicated Special Educational Needs Coordinator (SENCo).

We work closely with families of children ensure best possible outcomes are reached. We also work with outside agencies as appropriate. Children and families are always our main priority.



Partnership and Communication

Children, families and the Canterbury community are at the centre of everything that we do. We work in partnership with families within the setting and using our online system Baby's Days. Our staff and families share updates and photos about children's learning and development. We also use the system to share news about the setting and our charity's policies and safeguarding procedures.

At our last Ofsted inspection in June 2023 our provision was rated as **Outstanding**.


We hold community events at Christmas and Easter and during term 6 we hold a sports day, a summer event and a celebration for those children that are leaving us to start school the following September.

Three times a year, each child is a focus child, meaning that the team will concentrate on developing a child's strengths through their interests. We ask parents and carer to share photos and information from home and at the end of the week the child's key person produces a video and ideas for the family to share at home with their child.

Contact

Kendall Hall, Nunnery Fields, Canterbury, CT1 3JN

Registered charity no. 1037668.

 07980 492 024

 admin@steppingstonescanterbury.org.uk

 @Stepping_Stones_67

 Stepping Stones Pre School Canterbury